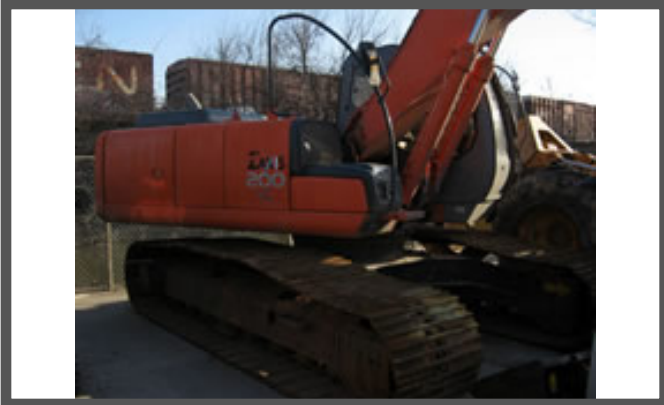


# EQUIPMENT FOR SALE

## 2002 Hitachi ZX200LC



**\$75,000**

### SPECIFICATIONS

#### EQUIPMENT OVERVIEW

Year **2002**  
Make **Hitachi**  
Model **ZX200LC**  
Stock # **6588**  
VIN # **108501**  
Hours **4,272**  
Color **Orange**  
Cab **EROPS**

#### CHASSIS SPECIFICATIONS

Engine **Isuzu AH-4HK Diesel, 159 HP**  
Transmission **Hydrostatic**  
Tires / Tracks **32"**  
Percentage **50 %**  
Drive **Hydrostatic**  
Fuel Tank **106 Gallons**  
Air Conditioning **Yes**

#### ATTACHMENTS and ADDITIONAL ITEMS

Arm Length **7' 11"**  
Max Reach **30' 11"**  
Lift Capacity **20,585# @ Ground Level**  
Max Digging Depth **20' 3"**  
Tail Swing Radius **9'**  
Bucket Width **45"**  
Operating Wt. **47,015#**