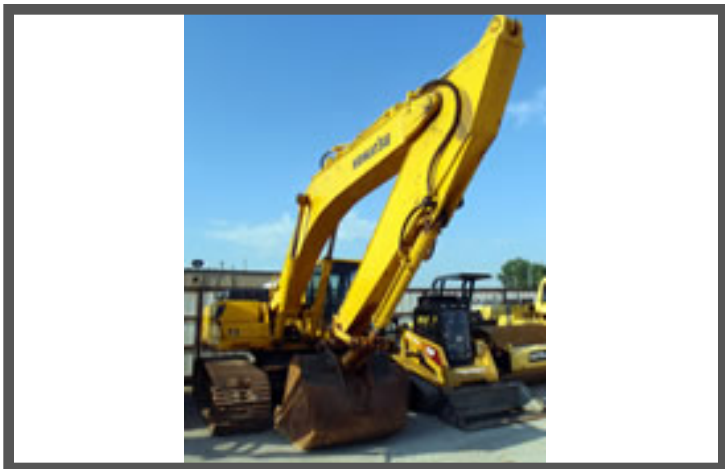




6300 Nall Ave, 2nd Floor, Mission, KS 66202

1999 Komatsu PC300 LC6



Year **1999**
Make **Komatsu**
Model **PC300 LC6**
Stock # **7611**
VIN # **A83336**
Hours **7,903**
Color **Yellow**
Cab **EROPS**

CHASSIS SPECIFICATIONS

Engine	Komatsu SA6D114E-1 Diesel, 232 HP
Transmission	Hydrostatic
Tires / Tracks	33.5"
Percentage	50 %
Drive	Hydrostatic
Air Conditioning	Yes
Differential Lock	No
Engine Brake	No

ATTACHMENTS and ADDITIONAL ITEMS

Arm Length	10' 6"
Max Reach	35' 10"
Lift Capacity	24,800#
Max Digging Depth	24' 3"
Tail Swing Radius	10' 10"
Bucket Width	62"
Operating Wt.	72,312#

SALE PRICE: \$60,000

LEASE FOR AS LOW AS: \$1,299.00

To the best of our knowledge the information contained in this Specification Sheet is correct at the time of publication; however, it should not be relied upon as a statement or representation of fact. TrucksAtHand.com and its affiliates or parent corporation may make improvements and/or changes to the content of this information at any time without notice. All merchandise, products, product specifications and product price specifications contained within the TrucksAtHand.com website or this Specification Sheet are subject to change without notice. All equipment sold "As Is."

Email: inquiries@trucksathand.com

Toll Free: (800) 763-4307 - Fax: (866) 798-3699

www.TRUCKSAtHAND.com • 800-763-4307