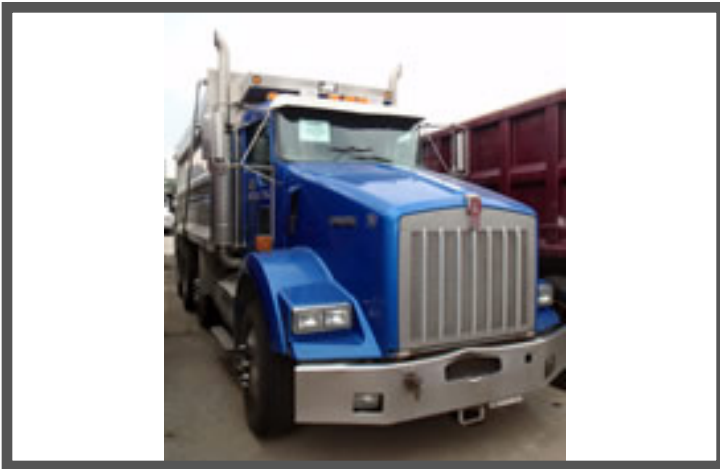




6300 Nall Ave, 2nd Floor, Mission, KS 66202

## 2004 Kenworth T800 w/2004 J & J 17 Ft Aluminum Dump Body



Year **2004**  
Make **Kenworth**  
Model **T800**  
Stock # **8253**  
VIN # **1NKDX4EX34J069239**  
Mileage **396,777**  
FAWR **18,000 #**  
RAWR **59,200 #**  
GVWR **77,200 #**  
Color **Blue**

### CHASSIS SPECIFICATIONS

Engine **Cummins ISX Diesel, 565 HP**  
Transmission **Eaton Fuller 10 Speed**  
Front Tires **315/80R22.5**  
Percentage **70 %**  
Axles **Tri-Axle**  
Rear Suspension **Air Ride**  
Rear Tires **11R24.5**  
Percentage **60 %**  
Type Axle **Steerable Axles: 1**  
Tag/Pusher Tires **315/80R22.5**  
Wheels **Aluminum**  
Fuel Tank **Two @ 75 Gallons Each**  
Air Conditioning **Yes**  
Differential Lock **Yes**

### BODY SPECIFICATIONS

Year **2004**  
Make **J & J**  
Model **17 Ft Aluminum Dump Body**  
S/N **TA17751**  
Controls **In Cab**  
Attachment **Electric Tarp**  
Bed Size **17' L x 8' W x 5 1/2' T**  
Double Frame **Yes**  
Wheel Base **241"**  
ECM **N/A**

**SALE PRICE: \$89,000**

**LEASE FOR AS LOW AS: \$1,765.00**

To the best of our knowledge the information contained in this Specification Sheet is correct at the time of publication; however, it should not be relied upon as a statement or representation of fact. TrucksAtHand.com and its affiliates or parent corporation may make improvements and/or changes to the content of this information at any time without notice. All merchandise, products, product specifications and product price specifications contained within the TrucksAtHand.com website or this Specification Sheet are subject to change without notice. All equipment sold "As Is."

Email: [inquiries@trucksathand.com](mailto:inquiries@trucksathand.com)

Toll Free: (800) 763-4307 - Fax: (866) 798-3699

[www.TRUCKSAtHAND.com](http://www.TRUCKSAtHAND.com) • 800-763-4307